

# ANNUAL REPORT 2024

---



Kinsey Institute  
INDIANA UNIVERSITY





Photo credit Indiana University

ABOUT OUR COVER

**Cover photo:** George Platt Lynes, *Mounsey, Beard* (Ballet Cover Project), 1950, Eastman Kodak Safety Film. From the Kinsey Institute Library & Special Collections, Indiana University. All rights reserved. Copyright © George Platt Lynes Estate.

**Report design:** Jennifer L. Wilder

CONTENTS

From the Executive Director	4
Year in Numbers	5
A Timeline of 2024	6
In the News	8
Research Highlights	10
Events	22
Collections Highlights	24
Funding and Support	30



# FROM THE EXECUTIVE DIRECTOR

As I look back on 2024, I'm reminded why the Kinsey Institute's work remains as vital as ever: people have countless questions about sex, relationships, and human connection, and we all deserve thoughtful, research-backed answers.

For nearly 80 years the Kinsey Institute has been at the forefront of sex research, working at the intersection of science, the humanities, and real-world impact. As technology evolves, social norms shift, and new health challenges emerge, our research adapts. Today, we're tackling urgent questions—how to navigate deepfakes and digital harassment, how online dating is changing intimacy, how to improve contraceptive use, and how to enhance menopause care—because understanding these issues directly affects people's lives. Scientific progress depends on asking bold questions and seeking meaningful answers.

Our work sits at a place of deep complexity. On one hand, we tackle challenges, like the need to reduce sexual violence, harmful online practices, and stigma. On the other, we recognize the power of pleasure, connection, and intimacy. Both are essential for understanding the fullness of our lives and improving well-being.

This year, our globally recognized experts published an incredible amount of peer-reviewed research and served as trusted advisors to academic institutions, cultural centers, news outlets, and health and technology companies in Indiana and around the world. We also said goodbye to extraordinary scholars and friends—Dr. Helen Fisher, Dr. Judith Allen, and Dr. Ruth Westheimer. Their contributions to our field, and to the Kinsey Institute itself, were immeasurable. I am honored their influence will continue to shape the way we understand sex, love, relationships, pleasure, sexual literacy, and history through their generous bequests to our Library & Special Collections. Our Collections benefited from several generous gifts this past year such as works by notable artists David Levinthal, Len Prince, and Patrick Alt. These are working collections and archives—supporting the production of everything from award-winning movies to museum exhibits to best-selling books.

As we look ahead, our commitment to academic freedom, scientific integrity, and historical preservation is unwavering. I am especially grateful to our remarkable community of supporters, donors, partners, and collaborators who make all these successes possible. Moving into 2025, I am excited that we are expanding our work in topics ranging from aging to online dating to gut-brain disorders as the result of this generosity and support.

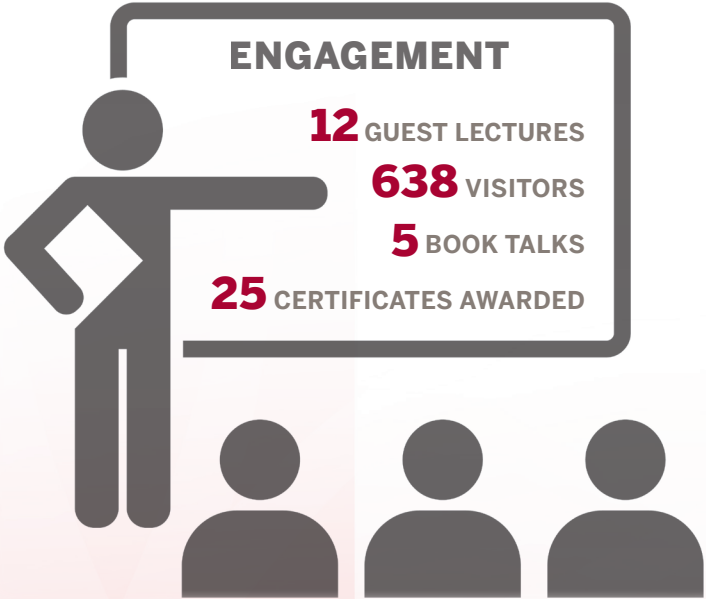
The work we do today—asking tough and thoughtful questions, challenging assumptions, and expanding access to reliable information—shapes how people navigate their romantic and sexual lives. As we move forward, the Kinsey Institute remains committed to ensuring that research, education, and open dialogue continue to enable people to make informed choices on their own terms and deepen their understanding of human connection.



Dr. Justin Garcia and his wife Michelle at their wedding in July 2024.

Sincerely,  
Dr. Justin Garcia

# THE YEAR IN NUMBERS



KI International  
Advisory Council  
meeting

**FEBRUARY**

## JANUARY



MAY



**Kinsey  
Institute**  
RESEARCH & EDUCATION

**Apply by March 20**



**HUMAN  
SEXUALITY  
INTENSIVE**


**July 18-21, 2024**  
In-person and virtual attendance options available

Learn More at  
[kinsey.in/intensive](https://kinsey.in/intensive)

**JULY**

## AUGUST

Dr. Justin Garcia speaks at the World Association for Sexual Health



Dr. Kelly Campbell

# The State of Dating Report

How Gen Z is Redefining Sexuality and Relationships

## SEPTEMBER

## OCTOBER



## NOVEMBER

## DECEMBER

**TRINGENT ART GALLERY** March 24 - April 19 • Reception April 19 • 6 - 8 pm.  
 One local benefit to support the Arts & Culture Foundation will be celebrated with Tringent Art Gallery.



A photograph showing two women from behind as they look at a gallery exhibition. The woman on the left is wearing a patterned jacket and carrying a large white bag. The woman on the right is wearing a black dress. They are standing in a room with white walls and a light-colored floor, looking at several framed artworks. One artwork on the right depicts a person in a red garment.



## A TIMELINE OF 2024



# IN THE NEWS

Our experts contributed to hundreds of stories, podcasts, TV shows, and other news in 2024. Here are a few that hit the headlines.

### The New York Times

#### The ‘Orgasm Gap’ Isn’t Going Away for Straight Women

A new study suggests they still have fewer orgasms during sex than men do, even with age and experience.



### THE WALL STREET JOURNAL



#### Ozempic May Have Another Side Effect: Better Sex

Drugs used for weight loss have helped millions of people take control of their physical health. But some patients are reporting unexpected improvements to their intimate lives.

### The Washington Post


#### The ‘love languages’ are popular. Are they real?

Since the '90s, couples have turned to the theory of the five “love languages” to help navigate relationship pitfalls. But a new scientific paper suggests that the science behind the idea is shaky.



### WebMD

#### Sex Drive: How Do Men and Women Compare?



You’ve probably heard things like this: Men get turned on at the slightest provocation and are ready to have sex anytime, anywhere, while women tend to want sex less often and have to be “in the mood.” For years, that’s been the widespread belief: Men just have higher sex drives than women.

### CNN

#### Humanity’s earliest recorded kiss adds new twist to the history of locking lips




A clay model from Mesopotamia dating to 1800 BC shows a nude couple intertwined on a bed, engaged in sex and kissing. The Trustees of the British Museum

### SCIENTIFIC AMERICAN

#### When Will We Finally Have Sex In Space?

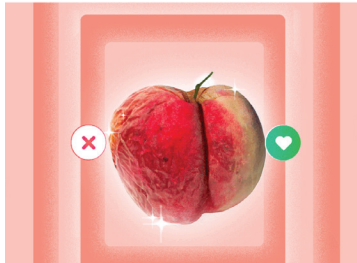
We’re talking about the big bang—but not in the way you might think.



### WIRED

#### Boomergasms Are Booming

Dating apps from Feeld to Match have become ground zero for aging singles to unlock their newfound sexual appetites—and a bolder sense of self.



### The Guardian




#### US single people under 50 having less sex since Roe overturned, study finds

Annual study from Match Group of 5,000 single people finds shift in behavior since supreme court ruling on abortion

### OBSERVER


#### ‘Hidden Master’ Rightfully Places George Platt Lynes in the American Photography Canon

Lynes was part of a cohort of Queer artists whose work helped define American Modernism.



### Los Angeles Times

#### Column: Taylor and Travis’ whirlwind romance is the love story we’ve been waiting for



### ZEITUNG ONLINE

#### Sie erkennen das "Nein". Warum machen sie trotzdem weiter?

Wie hätte ich merken sollen, dass sie nicht wollte? Neue Forschung belegt: Die meisten überschreiten sexuelle Grenzen wissend. Und zeigt, warum sie dennoch nicht stoppen.



### VOGUE



#### Perché mi piacciono gli uomini più piccoli? Secondo uno studio, avere una relazione con un partner giovane rende le donne più felici

Ne abbiamo parlato con la psicologa per capire perché succede a sempre più donne di innamorarsi di uomini più giovani. Tra motivazioni sociologiche e psicologiche e tabù ancora da infrangere

## PODCASTS

### BBC

#### LAST WORD



### HARVESTINGHAPPINESS

#### PODCAST

ENHANCING HAPPINESS: MIND-BODY CONNECTION TO SEXUAL HEALTH AND WELL-BEING

Featuring: DR. GREG LEWIS PHD

Powered by beducated



### SEX AND PSYCHOLOGY

#### PODCAST

DR. JUSTIN LEHMILLER



### SEGGS TALK RADIO EP 35

#### Dr. Amanda Gesselman



Stay up to date with the latest news.  
Join our community of 200k followers on social media @KinseyInstitute





# RESEARCH

## WORKING TO END SEXUAL VIOLENCE AND EXPLOITATION

In 2024, the Kinsey Institute Sexual Assault Research Initiative collaborated with over 10 leading U.S. universities to release transformative updates to the Sexual Experiences Survey – Victimization (SES-V), published in a special edition of the *Journal of Sex Research*. Led by Dr. Mary Koss from the University of Arizona, the interdisciplinary effort modernized how sexual exploitation is measured by researchers to reflect contemporary experiences such as being targeted online or experiencing reproductive coercion. Available in English and Spanish, SES-V provides researchers worldwide with tools to measure and ultimately reduce sexual violence and exploitation.



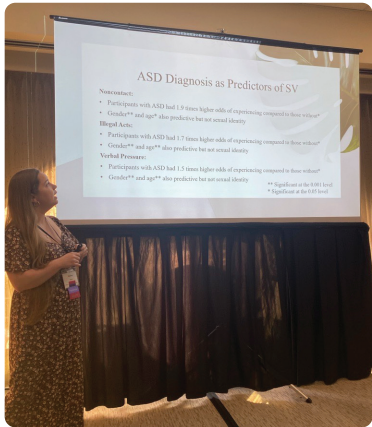
### WHAT SES-V SHOWED ABOUT TECHNOLOGY-RELATED EXPERIENCES AMONG U.S. ADULTS

- **15%** had someone threaten to share nude or intimate videos of them
- **12%** had nude or intimate videos shared with others or posted online without their permission
- **38%** were asked to do something sexual online when they did not want to
- **23%** were sent sexual materials after they asked the person to stop

### RESEARCH ON THE ROAD

Ending sexual violence isn’t just about research—it’s about impact. From assessing training programs to identifying vulnerability factors to supporting victim recovery, the Kinsey Institute Sexual Assault Research Initiative helped share evidence-based ideas and strategies to tackle sexual violence at seven conferences in 2024.

- Society for the Scientific Study of Sexuality Annual Conference, San Diego, CA
- American Psychological Association Annual Convention, Seattle, WA
- International Society for Research on Aggression Meeting, Munich, Germany
- Violence Prevention Conference, Portsmouth, NH
- Indiana University Rural Engagement Conference, French Lick, IN
- Society for Sex Therapy and Research Annual Meeting, Toronto, Canada
- Society for Public Health Education Annual Conference, St. Louis, MO



Indiana University PhD candidate Brianna Akers presents her research finding that people with autism spectrum disorders are 1.7x more likely to experience illegal sexual exploitation incidents.

### LET’S START THE CONVERSATION

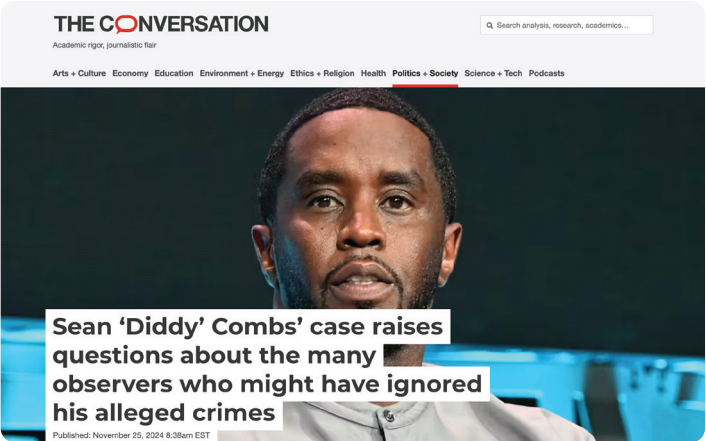
Research reveals a troubling reality: individuals are far more likely to intervene during a medical emergency than to act against sexual exploitation.

In *The Conversation*, Dr. Zoë Peterson, Director of the Sexual Assault Research Initiative at the Kinsey Institute, teamed up with Dr. Mary Koss (University of Arizona) and Dr. RaeAnn Anderson (University of Missouri-Kansas City) to spotlight the silent epidemic of bystander inaction. Their article broke down three categories of bystanders who facilitate sexual exploitation:

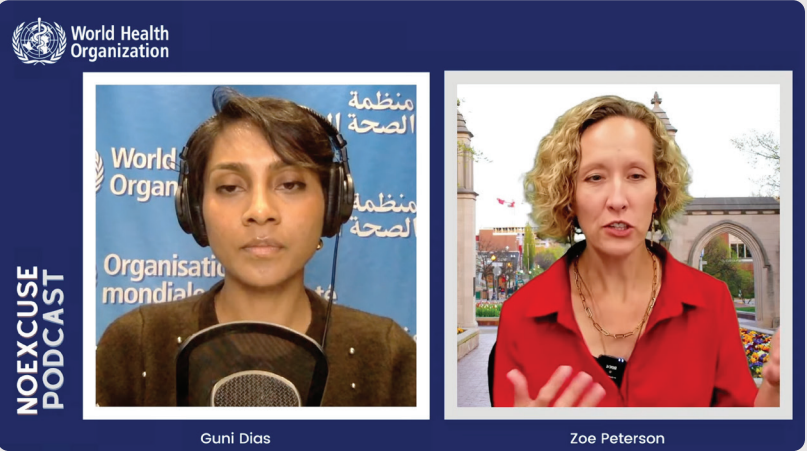
- **Enablers:** Ignore, rationalize, or minimize exploitation, often out of fear, denial, or misunderstanding, allowing harm to continue through inaction.
- **Complicit Participants:** Actively assist perpetrators by facilitating the exploitation, silencing victims, or covering up evidence, sometimes risking legal culpability.
- **Co-Perpetrators:** Directly join in the abuse, often in cases involving incapacitated victims, escalating harm through collective perpetration.

The takeaway?  
***Silence isn’t neutral.***

**Our research shows that 19% of Americans who experienced an act of illegal sexual exploitation reported that at least one of the sexual crimes against them included more than one perpetrator.**



This news article examines why it is common for people to observe sexual exploitation and not try to intervene or stop it from happening.



***“We want people to never attempt sexual assault in the first place. We need to think in new and novel ways about how to prevent perpetration.”***

Dr Zoë Peterson, Director of the Kinsey Institute Sexual Assault Research Initiative, speaks with Guni Dias on the #NoExcuse podcast, which has been viewed more than 30,000 times.



# DEMYSTIFYING MENOPAUSE

Menopause shouldn't be a mystery. We helped drive evidence-based conversations around menopause in 2024 in partnership with Womanizer through surveying 1,500 U.S. women aged 40 to 65.

**Did you know?** Menopause is more than just hot flashes—yet many people remain unaware of its full impact. In a U.S. demographically representative survey, we found that while 60% of Americans could identify hot flashes as a menopause symptom, far fewer knew about other common symptoms such as concentration or memory difficulties, vaginal dryness, bladder issues, and disrupted sleep.

## REAL-LIFE REMEDIES

We asked women how they manage their menopause symptoms. Here's what they said:

- Physical exercise: 24%
- Healthy diet: 20%
- Relaxation and stress reduction techniques: 19%
- OTC supplements/vitamins: 17%
- Regular sleep schedule: 15%
- Using lubricant: 14%
- Regular masturbation: 11%
- Antidepressants: 10%
- Kegel exercises: 9%
- Regular partnered sex: 8%
- Using sex toys: 8%
- Using vaginal moisturizers: 8%
- Doctor prescribed hormone therapy: 3%
- No management: 40%

## SYMPTOMS REPORTED

Survey respondents reported a wide variety of menopause symptoms, with just 13% reporting no symptoms:

- Hot flashes: 46%
- Night sweats: 41%
- Difficulty getting to sleep: 44%
- Difficulty staying asleep: 46%
- More tired than usual: 44%
- Difficulty concentrating: 30%
- More irritable than usual: 30%
- More anxious than usual: 27%
- More depressed than usual: 26%
- Mood swings: 37%
- Headaches: 36%
- Vaginal dryness: 28%
- Vaginal pain: 9%
- Pain when urinating: 6%
- Bloating or weight gain: 36%
- Joint pain: 48%
- Other symptoms: 1%



Womanizer held three pop-ups across the country with Dr. Shamyra Howard answering questions and sharing insights from the menopause survey; for more information visit [www.womanizer.com/us/menopause](http://www.womanizer.com/us/menopause)



## RX FOR REAL TALK

With interest building in menopause care, there's no reason the beneficial effects of masturbation should remain a secret. Our survey found 46% of peri-menopausal and 32% of post-menopausal women reported they noticed positive effects of masturbation on at least one menopause symptom.

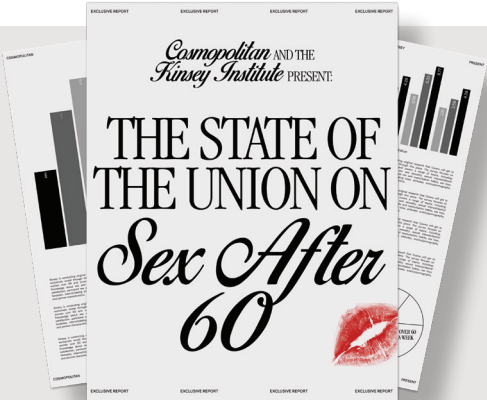
My doctor has talked to me about:

- Menopause: 44%
- Sex: 31%
- Masturbation: 5%

*“Self-pleasure offers an effective, accessible tool for menopausal symptom relief, which is important to integrate with existing care strategies.”*

KINSEY INSTITUTE SENIOR SCIENTIST  
DR. CYNTHIA GRAHAM

**Did you know?**  
46% of women would follow advice from their doctor to try masturbation as a way to treat symptoms related to menopause.



**Sex doesn't stop after 60.**  
Check out our special edition partnership with Cosmopolitan magazine at [knsy.in/SexAfter60](http://knsy.in/SexAfter60)





Kinsey Institute Senior Research Fellow Dr. Justin Lehmiller appeared on the Daily Show to discuss how to help the country come together.

## INSIGHTS ON LOVE & POLITICS

The pivotal 2024 election year saw politics shape personal relationships, influencing everything from online dating to long-term marriages. Our Singles in America study, conducted in collaboration with the Match Group, offered insights into how over 5000 Americans across the country were feeling as the nation approached the polls.

**1 Finding: Political views can impact your dating pool.** Our research showed singles are most open to potential partners who aren't politically-minded.

**Survey Question:** How likely are you to consider getting into a committed relationship with someone who:

- Doesn't care about politics: **43%**
- Is a Democrat: **40%**
- Is a Republican: **29%**

**2 Finding: While financial concerns were top of mind for single adults, more than 1 in 10 experienced significant stress from political events.** Research shows that stress in one area of life often transfers over into relationships.

**Survey Question:** What are the significant sources of stress in your life?

- Personal finances: **24%**
- Economy: **21%**
- Inflation: **21%**
- Political events: **13%**

In case you missed it, we spoke with the **Wall Street Journal** about how politically mixed couples found this election season tough to navigate.

“About 15% of Republicans and Democrats who are single say they would seriously date someone from the other side of the political divide.”



**They're Happily Married, They Just Can't Stand Each Other's Candidates**

## A BREAKTHROUGH FOR GUT-BRAIN DISORDERS

Researchers at the Kinsey Institute and Indiana University are advancing treatment for gut-brain disorders like inflammatory bowel disease and cyclic vomiting syndrome with the ANSTracker, a software that monitors autonomic nervous system signals in real-time. Grounded in polyvagal theory, the device helps reset the brain-body feedback loop. With funding from the National Institutes of Health and partnerships with the Medical College of Wisconsin, Ohio State University, and NeurAxis, clinicians are being trained to personalize treatments with the device and improve patient care.

**This device could be a game changer for clinicians as it changes their way of thinking in making diagnoses and helps improve patient outcomes.**

**DR. SUJATA PUNAIT, KINSEY INSTITUTE POSTDOCTORAL RESEARCH FELLOW**

## HOW STATE POLICIES IMPACT MENTAL HEALTH

In collaboration with The Trevor Project, the Kinsey Institute contributed to a study published in *Nature Human Behavior* that analyzed online survey data from over 61,000 people. The study showed that suicide risk increased significantly for transgender and non-binary youth in states enacting anti-transgender laws between 2018 and 2022, with incidents of suicide attempts rising by as much as 72%.

**Seeing increases of this magnitude sends alarm bells ringing about the real-world impacts anti-transgender policies are having on mental health.**

**DR. MYESHIA PRICE, KINSEY INSTITUTE ASSOCIATE RESEARCH SCIENTIST**

## WHAT EMOJI USE COULD SAY ABOUT ATTACHMENT

Kinsey Institute researchers revealed in a study published in *PLOS One* that individuals with avoidant attachment styles tended to use emojis less frequently. As technology continues to shape how we connect, understanding subtleties in digital communication is more important than ever.

**It is not just a smiley face or heart emoji: it's a way to convey meaning and communicate more effectively.**

**DR. SIMON DUBÉ, KINSEY INSTITUTE RESEARCH FELLOW**

## UNDERSTANDING USER EXPERIENCES WITH LORALS

The Kinsey Institute launched a study to assess user experiences with Lorals, an FDA-cleared latex underwear product designed to reduce the risk of sexually transmitted infections during oral sex.





PUBLICATIONS

Adams, O. R., Gesselman, A. N., & Bennett-Brown, M. (2024). Centering women of color: Chronic vulvovaginal pain (CVVP) communication. *Social Sciences*, 13(5), 265.

Afifi, T. D., Burnham, C. E., Collins, N., Gonzales, C., Ma, A., Mazur, A. P., Naffziger, E. E., Rand, K., Rosen, Y., Salehuddin, A., Stamps, J., Truscelli, N., & Wilson, V. (2024). Communicative and methodological challenges related to collecting data with older adults with dementia in senior living communities during the COVID-19 pandemic. *International Journal of Aging and Human Development*.

Anderson, R. E., Peterson, Z. D., Canan, S. N., Abbey, A., McCauley, H., Orchowski, L. M., Fedina, L., Littleton, H., & Koss, M. P. (2024). Words can hurt: A taxonomy of verbally pressured sexual exploitation in the SES-V. *Journal of Sex Research*, 61(6), 882-892.

Anderson, R. E., Peterson, Z. D., Koss, M. P., Abbey, A., Orchowski, L., Thompson, M. P., Kowalski, R., & Littleton, H. L. (2024). Preliminary evidence of validity for the Verbally Pressured and Illegal Sexual Exploitation modules of the Sexual Experiences Survey-Victimization. *Journal of Sex Research*, 61(6), 922-935.

Aneiros, A., Garcia, J. R., Hille, J., Moore, S., Peterson, Z. D., Prenkert, J., Sellers, A., Weeks, L. Y., & Westerhaus-Renfrow, C. (2024). Sex and gender in a Business Law class. *Midwest Law Journal*, 34(1), 134-157.

Ardizzi, M., Ravera, R., Umiltà, M. A., Ferroni, F., Ampollini, S., Kolacz, J., Porges, S. W., & Gallese, V. (2024). Impact trajectories of childhood maltreatment duration on affective and social development. *Development and Psychopathology*, 1-11.

Asamoah, N. A., Turner, R. C., Lo, W. J., Crawford, B. L., & Jozkowski, K. N. (In press). Evaluating item response format and content using partial credit trees in scale development. *Journal of Survey Statistics and Methodology*.

Barber, J. S. and Tim, F. L. (2024). Methods and theory for analyzing intensive longitudinal data in family research. *Journal of Marriage and Family*, 86(5), 1557-1585.

Bedford, R., Towler, L., Stone, N. & Graham, C. A. (2024). Evaluating the Home-Based Intervention Study (HIS-UK) to improve condom use skills and experience: A qualitative study. *International Journal of Sexual Health*, 36(4), 515–528.

Bennett-Brown, M., Chakraborty, J., Gesselman, A. N., Smith, C. R., & Campbell, J. T. (2024). The impact of affectionate communication and emotional intelligence on sexual stress among college women. *Communication Reports*, 1-15.

Bennett-Brown, M., Kaufman, E. M., Marcotte, A. S., & Gesselman, A. N. (2024). Cam site clients' perceptions of changes to their communication skills: Associations with psychological need fulfillment. *Sexuality & Culture*, 28, 370-380.

Blumenstock, S. M., Hoskins, K., & Lehmilller, J. J. (2024) Sexual self-esteem and orgasm consistency: Exploring the unique roles of body image and genital image. *Archives of Sexual Behavior*, 53(6), 2035-2044.

Bueno, X., Montenegro, M., Lo, W. J., Valdez, D., Crawford, B. L., Turner, R. C., & Jozkowski, K. N. (2024). Migrant generations and abortion circumstances: Assessing Latinx's abortion attitudes in the US. *Sociological Inquiry*, 94(1), 130-148.

Campbell, J. T., Bennett-Brown, M., Kaufman, E. M., Gesselman, A. N., Frederick, D. A., Garcia, J. R., & Mark, K. P. (2024). Women who experience more affectionate touch report better body satisfaction and relationship outcomes. *Journal of Sex Research*, 1-11.

Canan, S. N., Denniston-Lee, J., & Jozkowski, K. N. (2024). Descriptive data of transgender and nonbinary people's experiences of sexual assault: Context, perpetrator characteristics, and reporting behaviors. *LGBT Health*, 11(4).

Carter, C. S. (2024). . In H. Grassmann, M. Stuppiggia, & S. W. Porges, (Eds.), *The science of embodiment: Trauma, body and relationship*. S.W. Norton Professional Books.

Carter, C. S. (2024). Oxytocin and the healing power of love. In J. Tucci, J. Mitchell, S. W. Porges, & E. Tronick (Eds.), *The handbook of trauma-transformative practice: Emerging therapeutic frameworks for supporting individuals, families or communities impacted by abuse and violence* (pp. 96-106). Jessica Kingsley Publisher.

Carter, C. S. Bluthe, R-M, Connelly, J. J., & Kingsbury, M. A. (2024). Editorial: Oxytocin: Not “just a female hormone.” A very special issue and a very special molecule. *Comprehensive Psychoneuroendocrinology*, 20, 100273.

Carver, D. N., & Peterson, Z. D. (2024). Couples with infertility and the desire to conceive: Examining the association between discrepancies in desire to conceive and relationship and sexual satisfaction. *Journal of Sex and Relationship Therapy*, 39(4), 1091-1105.

Chester, E., Kolacz, J., Ake, C., Thonburg, J., Chen, X., Birgisdottir, B. E., Gunnlaugsson, G., & Vitzthum, V. J. (2024). Well-being in healthy Icelandic women varies with extreme seasonality in ambient light. *International Journal of Psychology*, 59(3), 486-494.

Cogan, N., Campbell, J., Morton, L., Young, D., & Porges, S. W. (2024). Validation of the neuroception of psychological safety scale (NPSS) among health and social care workers in the UK. *International Journal of Environmental Research and Public Health*, 21(12), 1551.

Cogan, N., Morton, L., Fitzpatrick, L. I., Lamb, D., De Kock, J. H., Alisha, A., Young, D., & Porges, S. W. (2024). Neuroception of psychological safety scale (NPSS): validation with a UK based adult community sample. *European Journal of Psychotraumatology*.

Cornelius, T. L., Jozkowski, K. N., Ross, J. M., Reidy, D. E., Wehle, S. M., Temple, J. R., & Drouin, M. (2024). Recent Research Involving Consent, Alcohol Intoxication, and Memory: Implications for Expert Testimony in Sexual Assault Cases. *International Journal of Law and Psychiatry*, 97, 102034.

Crawford, B. L., Jozkowski, K. N., Mena-Meléndez, L., Turner, R. C., & Lo, W. J. (2024). Examining the Relationship Between Perceptions of Pregnancy and Fetal Development Timing and Support for Abortion Bans. *Journal of Women, Politics, and Policy*, 45(1), 7-26.

Danoff, J. S., Carter, C. S., Gordevičius, J., Milčiūtė, M., Brooke, R. T., Connelly, J. J., Perkeybile, A. M. (2024). Maternal oxytocin treatment at birth increases epigenetic age in male offspring. *Developmental Psychobiology*, 66(2), e22452.

DeChants, J. P., Price, M. N., Nath, R., Hobaica, S., Green, A. E. (2024). Transgender and nonbinary young people's bathroom avoidance and mental health. *International Journal of Transgender Health*, 1-9.

De Groot, M., Myers, B. A., Stump, T., Dana, D., Kolacz, J., & Porges, S. W. (2024). 690-P: Relationship of diabetes distress and symptoms of autonomic nervous system dysregulation in Type 1 diabetes adults. *Diabetes*, 73(Supplement 1).

Dubé, S., Gesselman, A. N., Kaufman, E. M., Bennett-Brown, M., Ta-Johnson, V. P., & Garcia, J. R. (2024). Beyond words: Relationships between emoji use, attachment style, and emotional intelligence. *PLOS One*, 19(12), e0308880.

Gesselman, A. N., Bennett-Brown, M., Dubé, S., Kaufman, E. M., Campbell, J. T., & Garcia, J. R. (2024). The lifelong orgasm gap: exploring age's impact on orgasm rates. *Sexual Medicine*, 12(3) qfae042.

Gesselman, A. N., Kaufman, E. M., Bennett-Brown, M., & Campbell, J. T. (2024). Camsites as a context for sexual consent education: user experiences. *Journal of Sex Research*, 1-9.

Gesselman, A. N., Kaufman, E. M., Weeks, L. Y. S., Moscovicci, Z., Bennett-Brown, M., Adams, O. R., Campbell, J. T., Piazza, M., Bhuyan, L., Dubé, S., Hille, J. J., & Garcia, J. R. (2024). Exploring patterns in mental health treatment and interests of single adults in the United States: a secondary data analysis. *Frontiers in Public Health*, 12, 1292603.

Gnanadesikan, G. E., King, K. M., Carranza, E., Flyer, A. C., Ossello, G., Smith, P. G., Steklis, N. G., Steklis, H. D., Carter, C. S., Connelly, J. J., Barnett, M., Gee, N., Tecot, S. R., & MacLean, E. L. (2024). Effects of human-animal Interaction on salivary and urinary oxytocin in children and dogs. *Psychoneuroendocrinology*, 169, 107147.

Greer, K. M., Khan, S., Sangmo, D., Greene, A., & Rutkowski, D. (2024). Navigating the future of sexuality education in the USA: applying technology mediation theory to AI-Facilitated Sexuality Education. *Sex Education*, 1-15.

Greene, A., Baugh, M., Sherwood-Laughlin, C. L., Greathouse, L., Galyan, J., Stanojević, I. S., Sangmo, D., Jozkowski, K. N., Dubie, M. B., & Chow, A. (2024). Development of a sexual consent intervention for adolescents with intellectual and developmental disabilities. *Journal of Applied Research in Intellectual Disabilities*, 37(5).

Haus, K., Hadfield, J., Dennis, B., LaRoche, K. J., Turner, R. C., Crawford, B. L., Lo, W. J., & Jozkowski K. N. (2024). Doorways of understanding: A generative metaphor analysis. *Forum Qualitative Sozialforschung Forum: Qualitative Social Research*, 25(1).

Herbenick, D., Guerra-Reyes, L., Perry, C. P., Gonzalez, Y. R. R., Khan, S., Zounlomé, N. O. O., & Jozkowski, K. N. (2024). Navigating consent in the context of sexual choking/strangulation: Findings from qualitative interviews with young adults. *Sexuality Research and Social Policy*.

Hille, J. J., Bhuyan, L., & Tillewein, H. (2024). Ace and poly: The motivations and experiences of people on the ace spectrum in polyamorous relationships. *Sexes*, 5(2), 111-119.

Hobaica, S., Price, M. N., DeChants, J. P., Davis, C. K., Nath, R. (2024). Justice involvement and mental health in LGBTQ young people. *Children and Youth Services Review*, 160, 107571.

Horn, A. J., Cole, S., Nazarloo, H. P., Nazarloo, P., Davis, J. M., Carrier, D., Bryan, C., Carter, C. S. (2024). Severe PTSD is marked by reduced oxytocin and elevated vasopressin. *Comprehensive Psychoneuroendocrinology*, 19, 100236.

Holloway, J., Klein, T., Wiersma-Mosley, J. D., Jozkowski, K. N., Terrell, A., & James, L. (2024). Experiences of sexual assault and rape among college students with disabilities. *Journal of American College Health*, 72(3), 761-767.

James-Hawkins, L., & Jozkowski, K. N. (2024). “I just wasn’t thinking”: Strategic ambiguity and women’s accounts of unprotected sex. *Journal of Sex Research*, 61(5), 695-708.

Jozkowski, K. N., Bueno, X., LaRoche, K., Crawford, B. L., Turner, R. C., & Lo, W. J. (2024). Participant Driven Salient Beliefs Regarding Abortion: Implications for Abortion Attitude Measurement. *Social Science Quarterly*, 105(2), 374-391.

Jozkowski, K. N., Crawford, B. L., Hawbaker, A., Parker, E., Golzarri Arroyo, L., & Turner, R. C. (2024). Attitudes toward abortion legality and abortion regulation: Insights from a nationally representative study. *Social Science Quarterly*, 105(5), 1649-1667.

Jozkowski, K. N., Crawford, B. L., Simmons, M. K., Turner, R. C., & Lo, W. J. (2024). Predictors of engagement in abortion-related activism before and after the nomination of Supreme Court Justice Brett Kavanaugh. *Sexuality Research & Social Policy*, 21(1), 1-22.

Jozkowski, K. N., Marcantonio, T. L., Ford, K., Willis, M., Ham, L., Wiersma-Mosley, J. D., & Bridges, A. (2024). The effects of alcohol intoxication on perceptions of consent and refusal indicators in a fictional alcohol-involved sexual encounter. *Journal of Sex Research*, 61(3), 427-440.

Kaufman, E. M., Gesselman, A. N., & Bennett-Brown, M. (2024). Clients' perceptions of authentic intimate connection on erotic webcam modeling sites. *Journal of Sex Research*, 1-11.

Kern, S. G., Peterson, Z. D., Jozkowski, K. N., & Gerstein, E. (2024). Psychological symptoms associated with sexual victimization experiences: Differences as a function of the type and number of sexual acts and aggressive tactics. *Journal of Sex Research*, 61(3), 342-358.

Khodadadi, F., Punait, S., Ketabchi, F., Khodabandeh, Z., Bahaoddini, A., & Lewis, G. F. (2024). Comparison of heart rate variability, hemodynamic, metabolic and inflammatory parameters in various phases of decompansatory hemorrhagic shock of normal and vagotomized conscious male rats. *BMC Cardiovascular Disorders*, 24(1), Article 661.

Kılıç, D., Armstrong, H. L., & Graham, C. A. (2024). (Dis)Similarities in attitudes between partners about women’s solo masturbation: A dyadic approach to solo masturbation and its associations with sexual satisfaction. *Journal of Sex Research*, 1-13.

Kolacz, J. (2024). Autonomic assessment at the intersection of psychosocial and gastrointestinal health. *Neurogastroenterology and Motility*, 36(11), e14887.

Kolacz, J. (2024). Baseline and rest: A need for conceptual clarity when measuring parasympathetic reactivity and recovery. *Infant and Child Development*, 33(6), e2563.

Kolacz, J. & Porges, S. W. (2024). Social co-regulation of the autonomic nervous system between infants and their caregivers. In J. D. Osofsky, H. E. Fitzgerald, M. Keren & K. Puura (Eds)., *WAIMH handbook of infant and early childhood mental health: Biopsychosocial factors* (pp. 169-183). Springer.

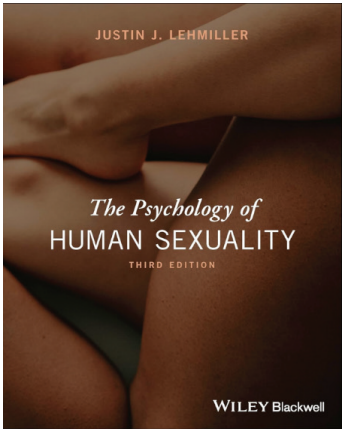
Koss, M. P., Anderson, R. E., Peterson, Z. D., Littleton, H., Abbey, A., Kowalski, R., Thompson, M., Canan, S., White, J., McCauley, H., Orchowski, L. M., Fedina, L., Lopez, E., & Allen, C. (2024). The revised Sexual Experiences Survey Victimization Version (SES-V): Conceptualization, modifications, items, and scoring. *Journal of Sex Research*, 61(6), 839-867.

Kurman, T. M., Ake, S. N., & Hille, J. J. (2024). Medical students’ perspectives on transgender care legislation and its impact on medical residency applications. *Sexuality, Gender & Policy*, 7(2), 107-121.

Lafortune, D., Lapointe, V., Dubé, S., & Bonneau, J. (2024). Virtual reality exposure therapy for sexual aversion: a proof-of-concept study on acceptability, adequacy, and clinical effects. *Journal of Sexual Medicine*, 22(1), 124–131.







LaRoche, K. L., Jozkowski, K. N., Crawford, B. L., & Jackson, F. (2024). Can someone be both pro-life and pro-choice? Results from a national survey of US adults. *Perspectives in Sexual and Reproductive Health*, 56(2), 106-115.

Leal, M., Adan, M., Heilman, K. J., Kolacz, J., & Cockcroft, K. (2024). Disruptive mood dysregulation disorder: The relationship between cardiac vagal tone, emotion recognition, and expressive prosody. *South African Journal of Psychology*, 54(2), 197-209.

Lee, W. Y., Hobbs, J. N., Hobaica, S., DeChants, J. P., Price, M. N., & Nath, R. (2024). State-level anti-transgender laws increase past-year suicide attempts among transgender and nonbinary young people in the United States. *Nature Human Behavior*, 8, 2096-2106.

Lehmiller, J. J. (2024). *The psychology of human sexuality* (3rd ed.). Wiley-Blackwell.

Lewis, G. F., daSilva, E. B., Aghajani, M., Date, S., & Jaime, M. (2024). Level of autistic traits in neurotypical adults predicts kinematic idiosyncrasies in their biological movements. *Frontiers in Integrative Neuroscience*, 18.

Litsou, K., Graham, C. A., & Ingham, I. (2024). Women reporting on their use of pornography: A qualitative study exploring women's perceived precursors and perceived outcomes. *Journal of Sex & Marital Therapy*, 50(4), 413-438.

MacLean, E. L., Carranza, E., Gnanadesikan, G. E., King, K. M., Allen, A. M., Linde-Krieger, L. B., Feldman, R., White-Traut, R. C., Hammock, E. A. D., Carter, C. S., Leng, G., Tecot, S. R., & Bell, A. F. (2024). Neurophysin I is an analytically robust surrogate biomarker for oxytocin. *Psychoneuroendocrinology*, 161.

Maeder, A. B., Bell, A. F., McFarlin, B. L., Park, C. G., Kominiarek, M. A., Toledo, P., Carter, C. S., Nazarloo, H., & Vonderheid, S. C. (2024). Feasibility study to compare oxytocin function between body mass index groups at term labor induction. *Journal of Obstetric, Gynecologic & Neonatal Nursing*, 53(2), 140-150.

Marcantonio, T. L., Jozkowski, K. N., Crawford, C. L., & Wiersma-Mosley, J. D. (2024). Young men's attendance in alcohol intensive environments and its association with sexual aggression tactics. *Journal of Sexual Aggression*, 30(3), 348-359.

Marcantonio, T. L., Jozkowski, K. N., Ham, L. S., & Parrott, D. (2024). The associations of acute intoxication and threats to masculinity on sexual aggression. *Journal of Studies on Alcohol and Drugs*, 85(2), 175-182.

Marcantonio, T. L., Jozkowski, K. N., & Williams, M. (2024). How do college students perceive their sexual partner responds to them when they refuse sexual activity? *Violence Against Women*.

Marcantonio, T. L., Thrash, A., Provost, A., & Jozkowski, K. N. (2024). What Would You Tell Your Friend About Trying to Consent After Having Consumed Alcohol? Advice from U.S. College Students About How They Navigate Alcohol-Involved Consensual Sexual Behavior. *Archives of Sexual Behavior*.

Maxwell, J. A., Harrington, A., Denes, A., Lehmiller, J. J., Muise, A., & Impett, E. A. (In press). Sexuality in relationships: Highlights and oversights from recent research. In A. L. Vangelisti, D. Perlman, & S. Sprecher (Eds.), *The Cambridge handbook of personal relationships* (3rd ed.). Cambridge University Press.

Mazur, A. P., Salehuddin, A. S., & Afifi, T. D. (2024). Engaging in communal coping during the transition to college. In K. R. Rossetto & E. M. Martin (Eds.), *The journey into college and career: Cultivating resilience among challenges* (pp. 145-154). Kendall Hunt.

Mena-Meléndez, L., Crawford, C. L., Valdez, D., LaRoche, K. J., Turner, R. C., & Jozkowski, K. N. (2024). Is news consumption related to abortion attitudes? An exploratory study with a nationally representative sample of US adults. *Frontiers in Communication and Networks*, 9.

Nadarzynski, T., Knights, N., Husbands, D., Graham, C. A., Llewellyn, C. D., Buchanan, T., Montgomery, I., & Ridge, D. (2024). Achieving health equity through conversational AI: A roadmap for design and implementation of inclusive chatbots in healthcare. *PLOS Digital Health*, 3(5), e0000492.

Nadarzynski, T., Knights, N., Husbands, D., Graham, C., Llewellyn, C. D., Buchanan, T., Montgomery, I., Rodriguez, A. S., Ogueri, C., Singh, N., Rouse, E., Oyebode, O., Das, A., Paydon, G., Lall, G., Bulukungu, A., Yanyali, N., Stefan, A., & Ridge, D. (in press). Chatbot-Assisted Self-Assessment (CASA): Co-designing an AI-powered behaviour change intervention for racially minoritised communities. *PLOS Digital Health*.

Nadarzynski, T., Knights, N., Husbands, D., Graham, C. A., Llewellyn, C. D., Buchanan, T., Montgomery, I., Khlaifa, N., Tichackova, J., Odeyemi, R., Johnson, S., Jesuthas, N., Tahia, S., & Ridge, D. (2024). The impact of chatbot-assisted self-assessment (CASA) on intentions for sexual health screening in people from minoritised ethnic groups at risk of sexually transmitted infections. *Sexual Health*, 21(4).

Navick, N., Mazur, A. P., & Gibbs, J. L. (2024). Behind the screen: The perception-reality gap in cybersexual harassment between remote coworkers. *New Media & Society*.

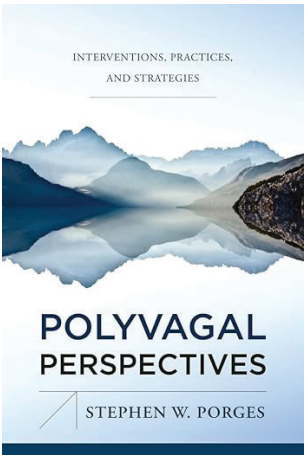
O'Connor, C., Alaggia, R., Begun, S., & Peterson, Z. D. (2024). An exploration of sexual consent beliefs, attitudes, and behaviors among middle school students in Canada. *American Journal of Sexuality Education*, 1-26.

Peterson, Z. D. (2024). Beyond sexual victimization and perpetration: Men, masculinities, and unwanted consensual sex. *Psychology of Men & Masculinities*, 25(4), 402–417.

Peterson, Z. D., Koss, M. P., & Anderson, R. A. (2024). Preliminary prevalence estimates of sexual exploitation as measured by the Sexual Experiences Survey Victimization (SES-V) in a national U.S. sample. *Journal of Sex Research*, 61(6), 904-921.

Peterson, Z. D., Littleton, H. L., Anderson, R. E., & Koss, M. P. (2024). Quantifying criminal sexual exploitation: The Illegal Sexual Exploitation module of the Revised Sexual Experiences Survey-Victimization (SES-V) measure. *Journal of Sex Research*, 61(6), 868-881.

Peterson, Z. D., Richmond, K. P., Holt, L., Beale, K. S., & Cook, V. (2024). Can a sex-positive sex education intervention reduce rape-supportive attitudes? Formative research, pilot randomized controlled trial, and evaluation of self-selection bias. *American Journal of Sexuality Education*, 1-33.



Porges, S. W. (2024). *Polyvagal perspectives*. W. W. Norton & Company.

Porges, S. W. (2024). Polyvagal theory: The neuroscience of safety in trauma-informed practice. In J. Tucci, J. Mitchell, S. W. Porges, & E. Tronick (Eds.), *The handbook of trauma-transformative practice: Emerging therapeutic frameworks for supporting individuals, families or communities impacted by abuse and violence* (pp. 51-69). Jessica Kingsley Publisher.

Porges, S. W. (2024). Disorders of gut–brain interaction through the lens of polyvagal theory. *Neurogastroenterology & Motility*, e14926.

Price, M. N., Lee, W. Y., Hobbs, J. N., DeChants, J. P., & Davis, C. K. (2024). Middle and high school LGBTQ youth report what makes a school LGBTQ-affirming across race/ethnicity, a topic modeling method. *Journal of School Health*, 94(7), 601-609.

Pugh, B., Canan, S., Becker, P., & Jozkowski, K. N. (2024). Comparing and predicting rape acknowledgment between sexual orientation and gender identity categories. *Journal of Interpersonal Violence*, 8862605241271383.

Ramos, E. N., Jiron, G. M., Danoff, J. S., Anderson, Z., Carter, C. S., Perkeybile, A. M., Connelly, J. J., & Erisir, A. (2024). The central oxytocinergic system of the prairie vole. *Brain Structure & Function*, 229(7), 1737-1756.

Reynolds, R. M., Holmstrom, A. J., Shebib, S. J., Clare, D. D., Edwards, A. A. H., Mazur, A. P., Poland, T. L., Royer, H. R., & Zhang, L. (2024). The impact of effort attributions on the quality of esteem support messages produced. *Communication Studies*, 75(3), 302-321.

Rice, L. J., Agu, J., Carter, C. S., Cho, Y. H., Harris, J., Heilman, K., Nazarloo, H. P. Naanai, H. Porges, S. W., & Einfeld, S. L. (2024). The relationship between cardiac activity, behaviour and endogenous oxytocin and vasopressin in Prader-Willi Syndrome: An exploratory study. *International Journal of Psychophysiology*, 205, 112429.

Stone, N., Graham, C. A., Bremner, S., McGrath, N., Bedford, R., Brown, K. E., Newby, K., Clarke, A., Jackson, L. Morrison, L., Nadarzynski, T., & To, Y. (2024). Evaluating the Home-based Intervention Strategy to reduce new chlamydia infection among young men aged 16-25 years by promoting correct and consistent condom use: Findings from a randomised controlled trial. *BMC Health Services Research*, 24, 1607.

Szucs, L. E., Pampati, S., Jozkowski, K. N., DeGue, S., Rasberry, C. N., Brittain, A. W., Copen, C., Zimbelman, L., Leonard, S., Young, E., & Trujillo, L. (2024). Asking for verbal sexual consent and experiences of sexual violence and sexual behaviors among high school students — Youth Risk Behavior Survey, United States, 2023. *MMWR Supplements*, 73(4), 59-68.

Tan, R. K. J., Hensel, D., Ivanova, O., Gomez Bravo, R., Olumide, A., Adebayo, E., Cleeve, A., Gesselman, A. N., Jyoti Shah, S., Adesoba, H., Marley, G., & Tang, W. (In press). Telemedicine use during COVID-19: Online cross-sectional surveys of eight countries from the International Sexual Health and Reproductive Health consortium. *Journal of Medical Internet Research*.

Thusi, I. I. (2024). Organizing for the Decriminalization of Sex Work in South Africa. *Radical History Review*, 2024(148), 155-163.

Tillewein, H., Bhuyan, L., & Hille, J.J. (2024). The impact of Covid-19 on communication and interpersonal relationships. *Current Psychology*.

Tucci, J., Mitchell, J., Porges, S. W., & Tronick, E. C. (Eds.). (2024). *The handbook of trauma-transformative practice: Emerging therapeutic frameworks for supporting individuals, families or communities impacted by abuse and violence*. Jessica Kingsley Publishers.

Uhlich, M., Peterson, Z. D., Li, Y., Brown, A., Han, J., & McBride, J. (2024). Different components of sexual narcissism are differentially associated with specific sexual aggression strategies: An exploratory study among male and female college students. *International Journal of Sexual Health*, 36(1), 111-125.

Valdez, D., Mena-Meléndez, L., Crawford, B. L., & Arvind, A., & Jozkowski, K. N. (2024). Online social media reactions to the overturn of *Roe v. Wade*: Public health implications and policy insights. *Sexuality Research and Social Policy*, 21, 616–631.

Valdez, D., Mena-Meléndez, L., Crawford, B. L., & Jozkowski, K. N. (2024). Analyzing reddit forums specific to abortion that yield diverse dialogues pertaining to medical information seeking and personal worldviews: Data mining and natural language processing comparative study. *Journal of Medical Internet Research*, 26, e47408.

Vanterpool, K. B., Francis, H. M., Greer, K. M., Moscovici, Z., Graham, C. A., Sanders, S. A., Milhausen, R. R., Yarber, W. L. (In press). Changes in marital relationships over the course of the COVID-19 pandemic. *Family Relations*.

Waters, A. B., Bottari, S. A., Jones, L. C., Lamb, D. G., Lewis, G. F., & Williamson, J. B. (2024). Regional associations of white matter integrity and neurological, post-traumatic stress disorder and autonomic symptoms in Veterans with and without history of loss of consciousness in mild TBI. *Frontiers in Neuroimaging*, 2, 1265001.

Wetzel, G. M., Sanchez, D. T., Gesselman, A. N., Adams, O. R., Campbell, J. T., & Garcia, J. R. (2024). Exploring the orgasm gap across racial/ethnic groups: A descriptive analysis. *Journal of Sex Research*, 1–10.

Wong, Y. J., Peterson, Z. D., Hoffacker, C. P., & Kang, J. (2024). Social norms: Implications for the prevention of male college students' perpetration of sexual aggression. *Professional Psychology: Research and Practice*, 55(5), 444–453.

Zerick, J., Kaufman, Z., Ott, J., Kuber, J., Chow, E., Shah, S., & Lewis, G. (2024). It takes two to trust: Mediating human-AI trust for resilience and reliability. *2024 IEEE Conference on Artificial Intelligence (CAI)*.

Zhou, Y., & Peterson, Z. D. (2024). Women's experiences of sexual harassment in online gaming. *Violence Against Women*. Advance online publication.



FACULTY AWARDS AND HONORS

**Jennifer Barber**  
2024 Mentor of the Year Award, Department of Sociology, Indiana University Bloomington  
Elected Chair, American Sociological Association's Section on Social Psychology.  
Honorable Mention, Distinguished Contribution to Scholarship in Population, ASA Section on Sociology of Population

**Sue Carter**  
Bruce McEwen Lifetime Achievement Award, International Society for Psychoneuroendocrinology

**Justin Garcia**  
10 Best Gender Studies Experts of 2024, DatingAdvice.com

**Amanda Gesselman**  
Lester A. Kirkendall Outstanding Mentor Award, Society for the Scientific Study of Sexuality

**Jessica Hille**  
2024 Master Teacher Finalist, Midwest Academy of Legal Studies in Business

**Kristen Jozkowski**  
Fellow, Society for the Scientific Study of Sexuality

**Stephen Porges**  
Distinguished Pioneer Award, The Association for Comprehensive Energy Psychology  
Mental Health Hall of Fame, 4th World Congress on Psychology and Psychotherapy

**Myeshia Price**  
Rosalind Franklin Society Special Award in Science, Mary Ann Liebert Inc.  
Outstanding Print Article, GLAAD Media Award Nomination

**India Thusi**  
John Hope Franklin Prize, American Studies Association



Kinsey Institute researchers and affiliates at the Society for the Scientific Study of Sexuality Conference in November 2024.

AWARDS FROM THE KINSEY INSTITUTE

**Alfred C. Kinsey Distinguished Researcher Award**  
Dr. Aleksander Štulhofer, University of Zagreb. "Sexual aging: A conceptualization and evolving operationalization."

**Scholars of Sexology Fellowship**  
Fiona Bell, Yale University. Sexuality in Russian literature.

**Louise Ferrall**, Indiana University. Fertility clinics, sex education, and artificial reproductive technology.

**Bruna Kalil Othero Fernandes**, Indiana University. South American Indigenous eroticism.

**Ben Maldonado**, Harvard University. Gerontology, sexology, and biological age.

**Gina Ogden Curatorial Scholarship**  
Dr. Marcy Brink, Research Fellow at Bar-Ilan University. Navigating desire through Curated Erotica

**Dr. Christopher Walling**, Associate Professor at the California Institute of Integral Studies. An embodied psychoanalytic approach to the 4-D Model.

**Kenneth R. Haslam Relationship Diversity Research Award**  
Dr. Christopher Gleason, Georgia State University. A history of American polyamory.



Kinsey Institute researchers and affiliates at the International Academy of Sex Research Conference in July 2024.



LECTURE EVENTS

**Dr. Olivia Adams**, University of Florida – medical mistrust and healthcare avoidance experiences

**Dr. James Brooks**, Indiana University – the intersection of race with sex and relationships

**Dr. Christopher Gleason**, Georgia State University and Common Good Atlanta – the history of polyamory in the United States

**Hettie Judah**, curator and author of *Acts of Creation: On Art and Motherhood* – how motherhood influences art and artists careers

**Dr. Wendy Kline**, Purdue University – 20<sup>th</sup> century gynecology and the history of pelvic exams

**David Levinthal**, artist and photographer – perspective, focus, and framing in photography

**Dr. Kirstin Mitchell**, University of Glasgow – contemporary sexual health challenges

**Tyler Patton**, Indiana University – personal stories and literature from the 1980s AIDS crisis

**Dr. Myeshia Price**, the Kinsey Institute and Indiana University – evidence-based protective factors or risks to LGBTQ+ mental health

**Dr. India Thusi**, the Kinsey Institute and Indiana University – sex work and the law across countries and cultures

**Dr. Maria Uloko**, VULVAi – urology, the vulva, and healthy aging

**Allison Gilbert and Pierre Lehu**, co-authors of *The Joy of Connections* – loneliness and cultivating connection

Unhanded

After a sixth time. how but dead serene. There horizon, And the dead unhanded to know body

GARY FISHER, 1987: I can't beat death. I can't beat the white man. I can't beat money (another \$10.00 check charge). I can't beat the system (time, traffic, the buses, movies are never as good as I expect, food). I can't stop spending (it's a form of sex). But it's not gratification I'm after: it's the frustration that I want. I think that I like the frustration. I think that I like death. Maybe by liking it it will spare me.

Dorian the scientists gathered. We need category, they said, for the winds of our But what is this for? By now we know we will die. I am no meteorologist I do know storms. In a dream I saw my own body at Race Point beach, bloated and I looked good for a dead man, I'll tell you that. was a hurricane forming on the clouds throwing their gray tendrils down. isn't it odd? For I took pleasure in seeing my body, one, tumesce and float away: my balloon. It entered the eye and I resolved ease, to take solace in the motion of my whirling somewhere offshore.

Writer Tyler Patton created poems "penetrated" with testimonies from men with HIV/AIDS held in the Kinsey Institute archives



Kinsey Institute Senior Scientist and Senior Director of the Rural Center for AIDS/STD Prevention Dr. William Yarber presents photojournalist Michael A. Schwarz and journalist Steve Sternberg with the Ryan White Distinguished Leadership Award for their profound August 1989 Atlanta Journal-Constitution feature "When AIDS Comes Home: The Life and Death of Tom Fox" and its continuing legacy.



Scholars visit the Kinsey Institute as part of "Content Warning: Engaging Trauma and Controversy in Research Collections," a National Endowment for the Humanities program that trained higher education faculty on navigating traumatic and controversial histories with care and resilience.



Kinsey Institute Executive Director Dr. Justin Garcia shares his perspective on the importance of academic freedom at the BIG Government Relations Conference.





***“We are extremely fortunate that Dr. Ruth’s archives will be here at the Kinsey Institute...As a Holocaust survivor, she appreciated so much this idea that materials needed to be somewhere, they had to be preserved.”***

DR. JUSTIN GARCIA  
SPEAKING TO **npr**

## COLLECTIONS

### DR. RUTH FINDS A HOME AT THE KINSEY INSTITUTE

The world had questions, and she gave them answers for more than 50 years: *Sexually Speaking*. On January 25, the Kinsey Institute held an event in NYC recognizing the legacy of “Dr. Ruth” Westheimer in what would be her final public appearance. During the event, moderated by Christie Hefner, Dr. Ruth announced the donation of her life’s work to the Kinsey Institute. This generous gift provides a permanent home for her archives, which will be preserved and made accessible for future generations.



Guests attend an event with Dr. Ruth Westheimer and the Kinsey Institute in NYC



## LEAVING A LASTING LEGACY

The Kinsey Institute mourns the loss of two esteemed colleagues, Dr. Helen Fisher and Dr. Judith Allen, whose passing in 2024 has left a profound void in both our institution and the broader academic and research communities.

### DR. HELEN FISHER

True to her own scholarship, the world’s expert on romantic love Dr. Fisher loved a good love story – a trait which resonated throughout her life’s work and helped her bridge the gap between academic and popular science. As Senior Research Fellow at the Kinsey Institute and Chief Scientific Advisor to Match, she co-founded the pivotal Singles in America study, which continues to provide groundbreaking scientific insights into dating and relationship trends in its 13th year. She felt strongly about sharing her work beyond the walls of academia and was a true public intellectual. Her numerous books, including *Anatomy of Love* and *Why We Love*, articles, op-eds, talks, and interviews have been widely consumed by multiple generations, and she is perhaps the most quoted source on the science of romantic love. Her TED talks alone have more than 22 million views. Her innovative ideas about love and sex will continue to shape the field and public discourse for many years to come.

### DR. JUDITH ALLEN

An internationally renowned feminist historian and leading authority on the history of sexology, Dr. Allen held a unique role as both a Senior Research Fellow and Historian at the Kinsey Institute. Dr. Allen was a Distinguished Professor and Walter Endowed Professor of History at Indiana University and Associate Editor of the *Journal of American History*. During her more than three decades at the Kinsey Institute and Indiana University, she made profound contributions as a champion for the scholarly study of gender and sexuality. Notably, she led the creation of the Department of Gender Studies and established the first doctoral program in gender studies in the United States. Her work spanned diverse realms such as mid-Victorian prostitution, historical representations of masculinity, 19th century abortion trials in Australia, and American sexual histories from the Salem witch craze to the age of Viagra.

***“Nowhere in the world has anything close to what we have here with the Kinsey Institute.”***

DR. JUDITH ALLEN

**The Kinsey Institute received the archives of Dr. Judith A. Allen and Dr. Helen E. Fisher, providing a rich resource for ongoing research and scholarship in human sexuality and relationships.**







Kinsey Institute Executive Director Dr. Justin Garcia and Curator Rebecca Fasman (above) attend the Hidden Master NYC movie premiere, along with members of the documentary team John MacConnell, Sam Shahid, O'Brien Kelley, Matthew Kraus and Nando de Carvalho (left).

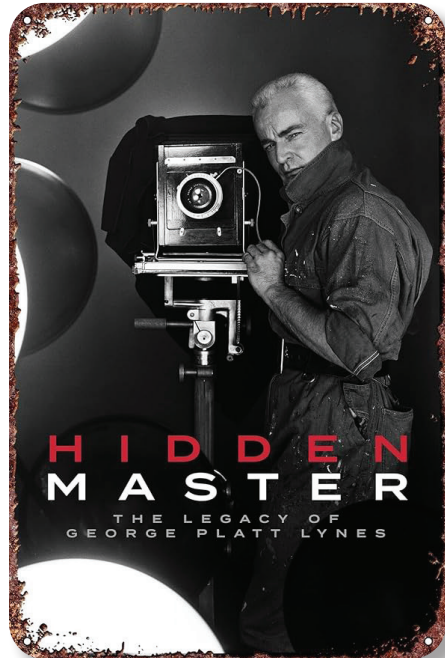
## NO LONGER A HIDDEN MASTER

At the premiere for the award-winning documentary *Hidden Master: The Legacy of George Platt Lynes* in Quad Cinema, NYC, the Kinsey Institute hosted a special reception to recognize Lynes' life and work, including the Institute's extensive collection of his masterful photography. Kinsey Institute Curator Rebecca Fasman was featured in the film and director Sam Shahid led a Q&A for guests following the screening. The event highlighted Lynes' enduring artistic legacy and deep connection to the Kinsey Institute.

**"Lynes' legacy transcends his fashion and portrait commissions. He harnessed his mastery over posing, lighting, and large format cameras to capture the minute details of his subjects to establish the erotic male nude as its own genre within fine art photography."**

**BEFORE MAPPLETHORPE, HUJAR, AND WARHOL, GEORGE PLATT LYNES ELEVATED THE MALE NUDE TO HIGH ART – SURFACE**

# SURFACE



Limited Edition



### GEORGE PLATT LYNES PRINTS FOR SALE

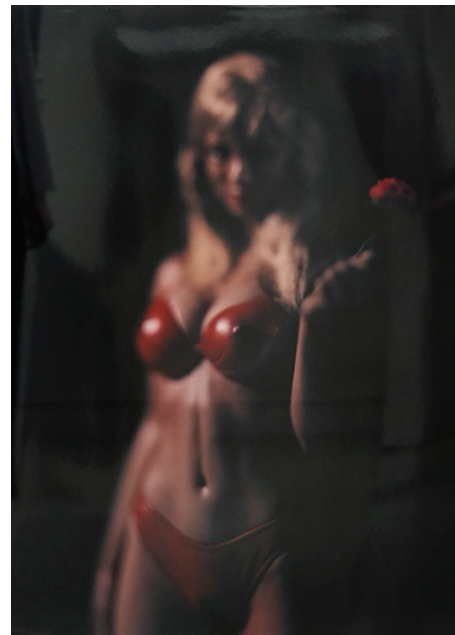
Experience the artistry of George Platt Lynes with an exclusive limited-edition series of platinum prints, available for purchase individually or as a complete portfolio. Proceeds support the Kinsey Institute's mission to preserve its Library & Special Collections.



## THE INTIMATE ALCHEMY OF DAVID LEVINTHAL'S PHOTOGRAPHY

This year, the Kinsey Institute expanded its collection of David Levinthal's meticulous and imaginative work with a gift of 60 dolls from the artist that were used to create his iconic XXX Polaroid series. A subsequent exhibition co-curated by Rebecca Fasman, IU Professor Emeritus Claude Cookman, and Miami University Teaching Professor of Art History Jennifer Pearson Yamashiro at the Grunwald Gallery showcased both his XXX and *Netsuke* photographic series, offering viewers a rare opportunity to examine his process for transforming objects into art.

Photos of *Intimate Alchemy*: David Levinthal's XXX Polaroids at Grunwald Gallery and dolls donated by the artist.







Guests attend Mariette Pathy Allen: *Breaking Boundaries* during Miami Art Week, with almost 2,000 people registered for the opening on December 2nd.

## MASTERPIECES IN MIAMI

Kinsey Institute Curator Rebecca Fasman participated in Miami Art Week, where she organized a retrospective at the Wilzig Erotic Art Museum, in collaboration with curators Jesse Egner and Orestes Gonzalez, showcasing five decades of Mariette Pathy Allen's photographs of transgender communities around the world.

During Miami Art Week, Rebecca Fasman also explored Kinsey Institute artifacts on display at the newly opened Museum of Sex and spent time speaking with artists and gallerists about emerging trends in erotic art, evolving representation, and the integration of themes such as intimacy, desire, and social issues into contemporary visual culture.

Works by Jared French (top right) and Pavel Tchelitchev (bottom right) housed in the Kinsey Institute Library & Special Collections. Other pieces by these artists were spotted for sale during Art Basel Miami.



## A GLOBAL GALLERY

The Kinsey Institute frequently loans items from its Library & Special Collections to museums and cultural institutions all over the world.

In 2024:

- 55 items
- 3 countries (Australia, Germany, United States)



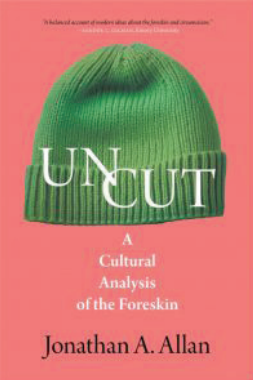
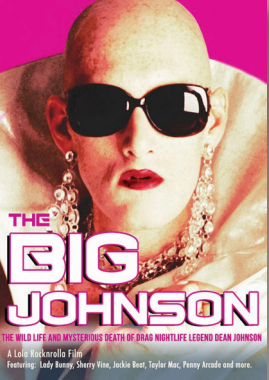
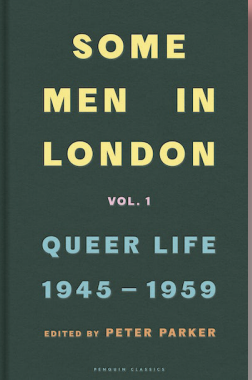
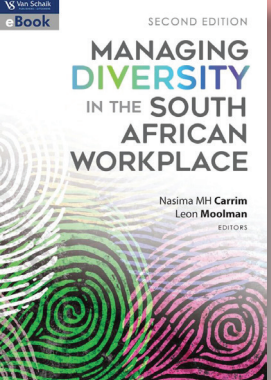
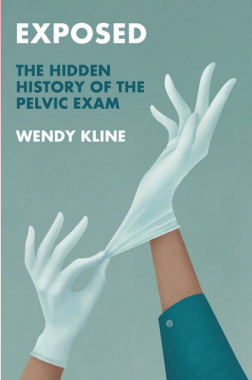
Items from the Kinsey Institute archives on display at the recently opened Museum of Sex Miami.

## FEATURED BOOKS AND DOCUMENTARIES

The Kinsey Institute serves as a vital resource for researchers, writers, filmmakers, and other creators, supporting a wide range of published books, documentaries, movies, and other works from its archives.

In 2024, the archives received:

- 638 visitors
- 7630 user requests



A selection of books and documentaries published in 2024 using materials in the Kinsey Institute's archives



Plainclothes, which was selected for the 2025 Sundance Film Festival, accessed footage from 1960s undercover operations in bathhouses from the Kinsey Institute archives



# FUNDING AND SUPPORT

The Kinsey Institute's world-renowned research and archives are sustained by a diverse network of supporters, including individuals, foundations, corporations, and grantmaking institutions from across the United States and around the world. Our ability to conduct pioneering, independent research on complex global issues—whether it's understanding AI's impact on human behavior, advancing sexual wellbeing, or identifying strategies to tackle sexual assault—is driven by the funding we receive. We are deeply grateful to all our funders and donors for helping us drive scientific progress and preserve critical knowledge for future generations.

The Kinsey Institute is a trusted research partner for a wide range of corporations, foundations, associations, and other grant-making institutions seeking to improve people's everyday lives. In 2024, we received funding for projects related to menopause, loneliness reduction, pregnancy planning, and gut-brain interactions totaling more than \$1.7 million. Kinsey Institute experts share findings widely through peer-reviewed journal publications, special reports, conferences, media interviews, and other channels.

Private philanthropy is a cornerstone for our institution's ability to preserve academic freedom, research excellence, and intellectual curiosity. We are honored by the strong demonstration of trust and investment from generous individuals and organizations, which raised \$5.7 million in cash gifts, pledges, planned gifts, and gifts-in-kind in 2024.

## Where our donors come from:

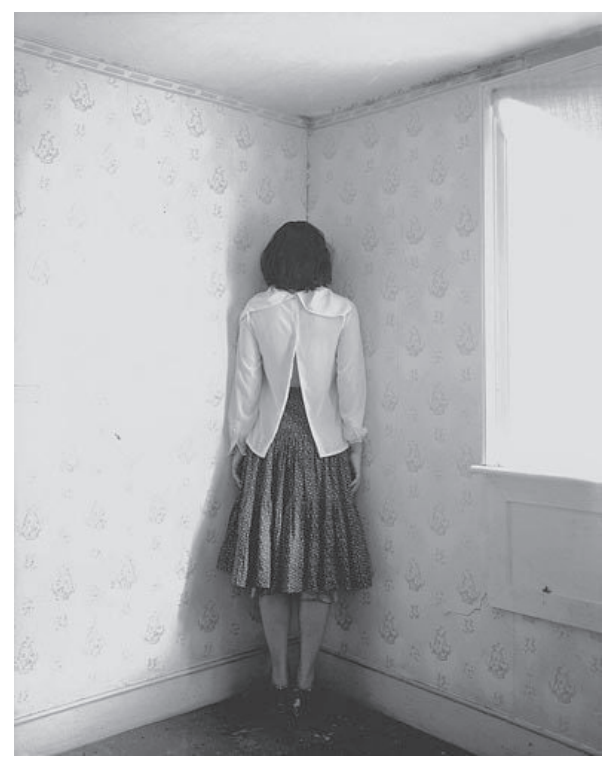
- 5 continents
- Almost 30 U.S. states
- Indiana is our #1 giving region (Go Hoosiers!)

# CROWDFUNDING CAMPAIGN

Thanks to Match Group, all gifts to the Kinsey Institute Research Fund throughout October 2024 were matched 2:1. This meant all gifts – large or small – had triple the impact for pioneering programs on topics such as how technology and AI influences relationships, the evolving risk factors for sexual violence, and changing sexual and relationship needs later in life.

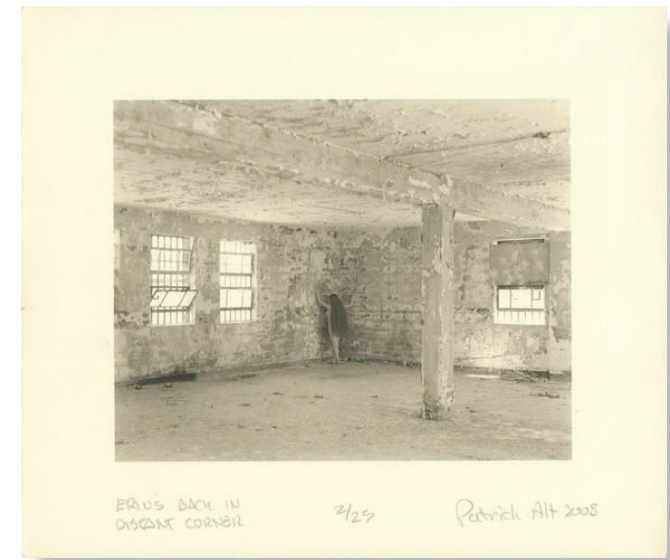
- \$43,730 → \$131,190
- Median gift size \$100
- Gift size range \$5 to \$5000

We take great pride in the trust placed in us by our supporters. To demonstrate our commitment to ethical rigor, transparency, and accountability, accounting firm Plante Moran completed an independent audit of the Kinsey Institute in accordance with attestation standards established by the AICPA. Their report is publicly available at [finance.iu.edu](https://finance.iu.edu).

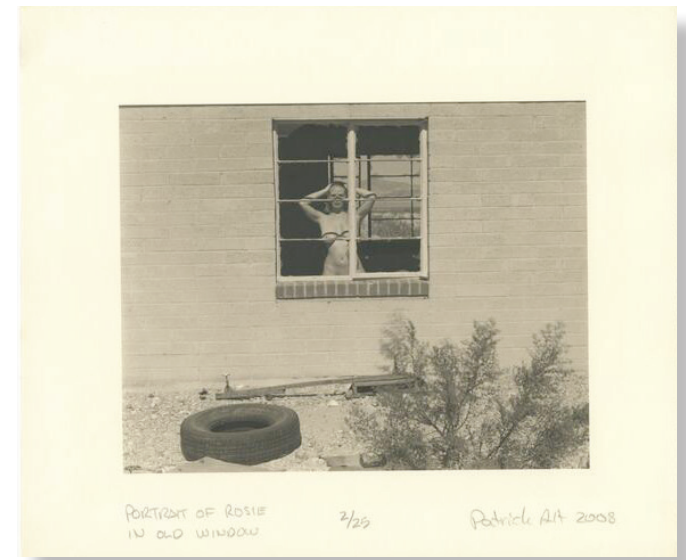


A selection of *Jessie Mann "Self Possessed"* photographs by Len Prince that were donated to the Kinsey Institute by Seth L. Harris and Laurie E. Gregory-Harris. Copyright © Len Prince.

In 2024, the Kinsey Institute Library & Special Collections received works from fine art photographers Len Prince and Patrick Alt.



A selection of *Nude in the Natural World, Man Made* photographs by Patrick Alt that were donated to the Kinsey Institute by Melissa Alt.







# Kinsey Institute

INDIANA UNIVERSITY

**KINSEYINSTITUTE.ORG**

LINDLEY HALL 305 | 150 S WOODLAWN AVE. | BLOOMINGTON, IN 47405

**KINSEY@IU.EDU | 812-855-7686**

**@KinseyInstitute**

